



Tractors

ELIOS

240 230 220 210



# A perfect fit, anywhere. The ELIOS.

Sometimes you just need to be built right. For work in confined spaces or on steep slopes, a tractor with the right format is essential. With its low centre of gravity and very low overall height, the ELIOS can reach places that are inaccessible to conventional tractors. Front loaders, electronic spool valves and a front PTO expand its range of potential applications.

Compact and manoeuvrable wherever you need it. The ELIOS.







# ELIOS 240-210.







Model range	6
<b>CLAAS POWER SYSTEMS</b>	<b>8</b>
Engine	10
Transmission and PTO	12
Construction	14
Hydraulics, linkage	16
Front loaders	18
<b>Comfort</b>	<b>20</b>
Cab	22
Right-hand control panel	24
<b>Service</b>	<b>28</b>
Maintenance	30
CLAAS Service & Parts	32
<b>Features</b>	<b>34</b>
<b>Specifications</b>	<b>35</b>

# Endless possibilities.

## Customised performance.

In the power sector around 90 hp, customer requirements, working conditions and applications vary enormously from farm to farm. The ELIOS series from CLAAS therefore features a wide range of models and equipment options for compact standard tractors.

## Extensive choice.

The ELIOS 200 is not the only tractor with plenty to offer. The 4-cylinder range from CLAAS has just the right tractor for every user, from the compact NEXOS to the impressive ARION 500 delivering up to 163 hp. Discover the full range on our website at [claas.com](http://claas.com).



The ELIOS series comprises four models developing 75, 85, 92 and 103 hp, with the top-of-the-range model achieving 103 hp thanks to CLAAS POWER MANAGEMENT. Lively yet economical 4-cylinder common rail engines from FPT deliver smooth running and high torque.



The highest-specification hydraulic equipment package supplies 85 l/min to the rear linkage and four additional electronic spool valves. Operation is via the ELECTROPILOT and two rocker switches in the right-hand side console.



With a minimum overall height from 2.43 m with cab – just 1.92 m with platform and retracted roll bar – and a turning radius of just 3.47 m, the ELIOS is ideally suited to work in confined spaces in farm buildings or greenhouses.



The REVERSHIFT reversing function combined with the ELECTROPILOT electronic four-way control lever for dual spool valve operation is perfect when using a front loader. At the same time, the glass roof affords an optimum view of the front loader when raised.



Powerful rear and front linkages enable the ELIOS to handle a huge range of potential applications. The ELIOS can be equipped with a front linkage with integrated front PTO shaft ex factory. Coupled with a low centre of gravity, the ELIOS is perfectly suited to challenging operations in difficult terrain.



In the top specification format, the ELIOS features a 24/12 transmission with REVERSHIFT reversing function and TWINSHIFT two-stage powershift transmission. This makes it extremely flexible and easy to handle. Available with a permissible gross vehicle weight below 3.5 t and a wide selection of factory-fitted tyres, the ELIOS is equally at home when used for municipal work.



# CPS – CLAAS POWER SYSTEMS.

## Optimised drive for outstanding results.

The CLAAS machinery development programme constantly strives to maximise efficiency, improve reliability and optimise cost-effectiveness. CLAAS POWER SYSTEMS (CPS) bring together top-quality components to create a drive system that sets new standards – and always delivers maximum power when it is needed. CPS is ideally matched to the working system, featuring fuel-saving technology that quickly pays for itself.



**CPS** | CLAAS  
POWER  
SYSTEMS





# Constant output – low fuel consumption.



## Strong at heart.

Under the bonnet, all models have FPT engines with 3.4 l cubic capacity and state-of-the-art fuel-saving technology:

- Viscous fan
- 1,600 bar high-pressure common rail injection
- Turbocharger
- Intercooler
- Complies with emissions standard Stage IIIB (Tier 4i) thanks to a diesel particulate filter, DOC catalytic converter and external, cooled exhaust gas recirculation (EGR)

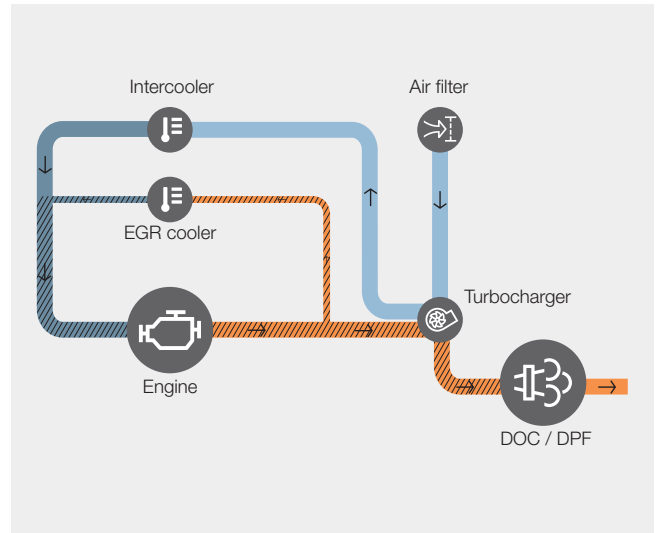
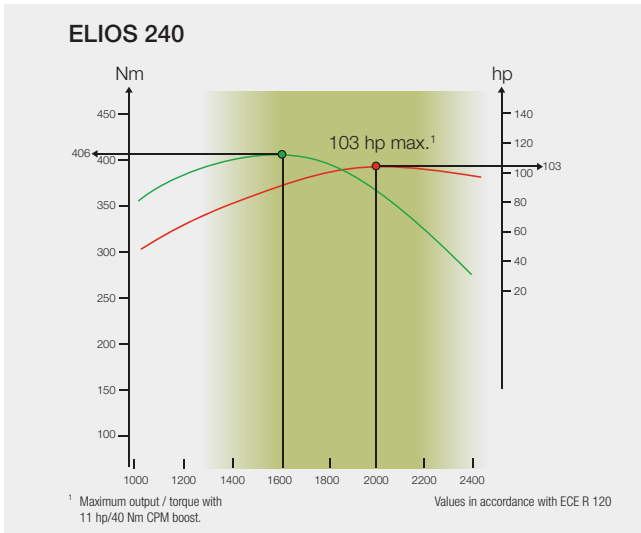
The cubic capacity is now 3.4 l which guarantees low fuel consumption. When combined with a well-balanced 4-cylinder engine, this ensures that the tractor runs very smoothly with low noise levels and a long service life. Despite its compact format, the ELIOS with viscous fan and the latest injection and emission control technology is well equipped for efficient operation. The ELIOS comes with an engine air pre-warmer as standard. An electric cold-start unit which starts the engine gently and reliably at temperatures down to  $-30^{\circ}\text{C}$  is also available as an option.

ELIOS	Maximum output (hp)	Maximum torque (Nm)
	ECE R 120	ECE R 120
240	103 <sup>1</sup>	406 <sup>1</sup>
230	92	366
220	85	334
210	75	309

<sup>1</sup> Maximum values with CPM (11 hp boost)



Thanks to electronic common rail injection, an engine speed memory comes as standard. A second memory is available as an option.



### Constant output.

The CLAAS-specific engine performance curve provides full torque in a wide engine speed range, guaranteeing constant output and power delivery when they are needed. This makes it easy to save fuel while working at a low engine speed and maximum torque with the ECO PTO, or to work at rated speed with a full reserve. The high efficiency level eliminates the need for frequent gear changes.

### The ELIOS 240. More power.

Thanks to CPM (CLAAS POWER MANAGEMENT) the ELIOS 240 delivers a boost of up to 11 hp during PTO work and transport work from 13 km/h. It is therefore ideal for hauling bigger trailers and for use with wider forage harvesting machinery. Despite its very compact format, the ELIOS 240 has a highly impressive maximum output of 103 hp. As a result, the ELIOS has an excellent power-to-weight ratio of 33.8 kg/hp, making it suitable for a wide range of applications.

### Outstanding pollutant reduction.

The introduction of the Stage IIIB (Tier 4i) emission regulations is the most important step to date in the control of pollutant emissions in the compact class. These regulations require a 90% reduction in particulate matter (PM) as well as a 50% cut in nitrogen oxide (NOx) content.

### Clean and efficient.

In EGR (Exhaust Gas Recirculation) technology, a proportion of the engine exhaust gas is mixed with fresh air drawn in separately, reducing the speed of engine combustion and the temperatures generated. This technology largely eliminates the accumulation of nitrogen oxides. However, soot thresholds can only be met with the aid of a particulate filter (DPF). EGR technology does not require a second tank or additional resources.

When developing the ELIOS tractors, CLAAS factored in all the components that would be necessary to meet the Stage IIIB (Tier 4i) exhaust emissions level. As a result, access to the tractor and visibility from the cab are not compromised in any way. The combined DPF / DOC catalytic converter is safely housed under the bonnet.



# The choice is yours.



## Four transmission options.

With four transmissions to choose from, as well as two- or four-wheel drive, the ELIOS always offers the perfect solution.

For two-wheel drive:

- 12 F / 12 R with mechanical reverser

For four-wheel drive:

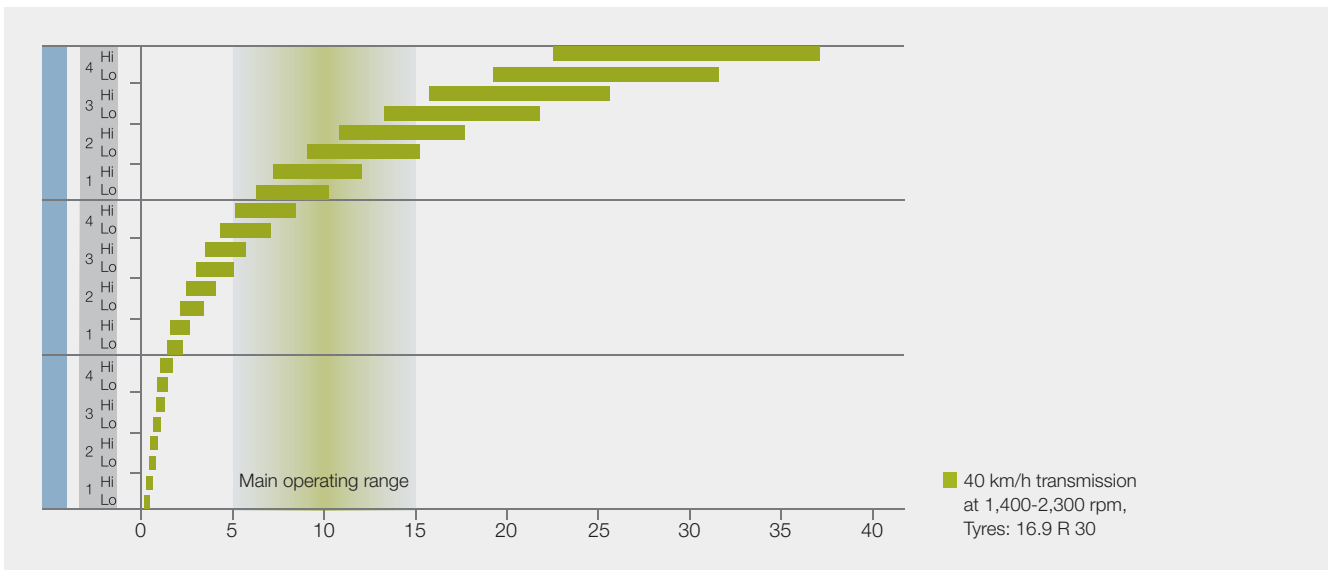
- 24 F / 24 R with mechanical reverser and splitter
- 24 F / 24 R with mechanical reverser and TWINSHIFT two-stage powershift
- 24 F / 12 R with REVERSHIFT clutchless reverser and TWINSHIFT two-stage powershift<sup>1</sup>

Four-wheel drive is push-button-activated. To eliminate unnecessary tyre wear, four-wheel drive is automatically engaged or disengaged at 14 km/h.



The 24-gear transmission can optionally be fitted with a mechanical splitter on the right next to the steering wheel or the easy-to-use TWINSHIFT two-stage powershift which is operated from the gear-shift lever.

<sup>1</sup> Only transmission available with the ELIOS 240.



The 24 gears deliver the ideal speed for all types of operation. Specialist applications are tackled to perfection as the ELIOS has a minimum ground speed of 500 m/h at rated engine speed. The TWINSHIFT powershift transmission can be activated with ease via a push button on the gear knob. All the ELIOS transmissions have been developed to ensure low power losses.

Thanks to the REVERSHIFT clutchless reverser you can almost forget the clutch pedal: the clutch button on the shift lever offers numerous advantages, especially during transport work. REVERSHIFT also enables you to change direction quickly and smoothly – particularly important when working with a front loader.

### Powerful drive. The PTOs.

The ELIOS comes with a range of PTO options. These include a ground speed PTO and a 540 ECO PTO with reduced engine speed for low diesel consumption and low noise levels during light PTO work.

- 540 rpm
- 540 ECO and 540 rpm
- 540 and 1,000 rpm

PTO engagement is hydraulically supported as standard. With the REVERSHIFT transmission there is an option of electronic PTO engagement.



The reverser for mechanical reversing and the electronic REVERSHIFT is handily positioned to the left of the steering wheel.



With REVERSHIFT: the electronic clutch is operated by pressing a button on the gear lever.

# CLAAS tractor concept: Compact, stable and manoeuvrable.

A long wheelbase combined with optimum weight distribution and a compact overall length guarantee superb flexibility and performance.

Long wheelbase and excellent weight distribution:

- High driving comfort
- Good and safe road handling
- Low centre of gravity, perfect when working on slopes
- Higher lifting capacity thanks to improved stability
- High tractive power and performance due to low ballast requirement
- Light on the soil and dynamic road transport thanks to an excellent power-to-weight ratio
- Optimises fuel consumption

Short overall length:

- Good manoeuvrability
- Good visibility
- Good guidance of front-mounted implements
- Compact and manoeuvrable thanks to a minimum turning radius of just 3.47 m with four-wheel drive
- Minimum external width from 1.65 m

## Smart ideas throughout.

Optimum weight distribution for everyday jobs using front loaders and heavy front and rear attachments, such as wood chippers or verge mowers, ensures safe handling on the road and in the field.

Even in difficult terrain, such as when operating on slopes, a low centre of gravity gives the ELIOS excellent stability. Together with balanced weight distribution, this ensures exceptional safety and efficiency during everyday tasks. With appropriate tyres, the ELIOS boasts an overall width of just 1.65 m, enabling it to be driven between widely spaced vineyard rows without any problems. Sufficient ground clearance is yet another requirement for machines working in the field, whether for driving over swaths during haymaking or when negotiating beds or ridges in vegetable cultivation – here, too, the ELIOS is a winner.

## Why settle for anything else?

Whether your application is general agriculture, horticulture, equestrian, vegetable production, viticulture or municipal work, the ELIOS is designed for you. If required, the permissible gross weight of the ELIOS can be limited to 3.5 t so that it can be driven on public roads with a standard passenger car driving licence.<sup>1</sup>

<sup>1</sup> Not available in all countries. Depends on local legislation.







### Safe on the road.

The brakes cope with the low tare weight from 2.85 t and maximum permissible gross weight of 4.6 or 5.1 t with an optimum level of safety and stability, assisted by automatic four-wheel drive engagement on braking and the hydraulically supported service brake.

CLAAS provides optional turf tyres ex factory (sizes: 23.1-26 rear and 550/45-22.5 front) to enable the ELIOS to be driven over sensitive grass cover or wet subsoil in parks and on sports fields without damaging the precious turf – all year round.



<sup>1</sup> With roll bar retracted



# Hydraulics to meet every need.



## Great lift capacity. Great potential.

With a maximum lift capacity of 3.1 tonnes at the rear linkage's mounting points and up to 2.8 tonnes at the front linkage, the ELIOS is well equipped to face the challenges of day-to-day operations. The rear linkage in both the cab and platform versions of the ELIOS is also available with a mechanical or electronic operating unit.

The front hydraulics and front PTO are available ex factory for seamless integration into the tractor. When folded up, the front linkage is highly compact with a minimal overhang. The tractor rear offers a wide range of hitching options including, for example, a long ladder hitch with drawbar or a pick-up hitch.

Expand your tractor's range of applications without compromising on manoeuvrability with the CLAAS FL 60 or FL 40 front loader – working together in perfect harmony.

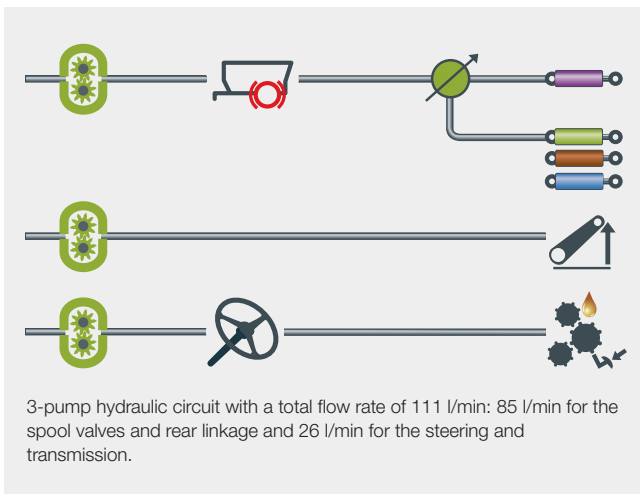


The hydraulic trailer brake enables you to remain flexible during transport operations (not available in every country).



You can choose between an electronic and a mechanical rear linkage control system. Both are ergonomically positioned to the right of the driver's seat.





## Hydraulic output on demand.

The ELIOS is equipped with two hydraulic pumps as standard, which together deliver a flow of 85 l/min. One hydraulic circuit supplies the steering system at 26 l/min, while a second circuit supplies the rear linkage and spool valves at 59 l/min. A third hydraulic pump configuration is optionally available for a maximum combined flow of 111 l/min, with the steering system, rear linkage and spool valves each supplied via a separate pump. This enables overlapping actions to be performed simultaneously or device combinations with extremely high hydraulic requirements to be operated as well. Additionally, valuable fuel savings can also be achieved by operating at low engine speeds while maintaining a high hydraulic output.

In conjunction with the three-pump hydraulic circuit, the ELIOS can optionally be equipped with up to four electronic spool valves, two of which are operated via the ELECTROPILOT, and the other two via two rocker switches. The third and fourth ELECTROPILOT functions enable the unit to fully control the front loader.

## The choice is yours.

Despite its compact format, the ELIOS has a surprising number of equipment options; as a result, it is well equipped to face the challenges of day-to-day work.

- Mechanical or electronic rear linkage with maximum 3.1 t lift capacity
- External rear linkage controls
- Hydraulic circuit with flow rate of 59 or 85 l/min for rear linkage and spool valves
- Up to three mechanical or four electronic spool valves
- Optional integrated front linkage with 2.8 t lift capacity and alternative headlights
- 1,000 or 540 ECO front PTO
- Factory-fitted CLAAS front loader brackets
- Wide range of hitching options such as drawbar, clevis, pickup hitch, Piton Fix and CUNA



The optional front linkage with 2.8 t lift capacity extends the range of ELIOS applications.



For implement attachment, the electronic and mechanical rear linkage can be operated externally at the rear of the tractor.



# A perfect fit. CLAAS front loaders.



## No compromises. Even in front loader work.

For front loaders, in particular, the connection to the tractor is very important in order to guarantee safe, fast loading operations. When developing the ELIOS series, it was therefore very important for the mounting brackets to be fully integrated into the complete tractor concept. The brackets are positioned a long way back, providing stability during heavy work. The robust bolted connection between the front loader bracket, made from high-strength cast steel, and the engine half frame does not compromise the steering lock or ease of maintenance. The design of the mounting bracket allows a CLAAS front loader to be retrofitted at a later date.

## Three operating options.

The CLAAS front loader on the ELIOS is operated via the ELECTROPILOT (electronic) which is integrated into the side console, FLEXPLOT (hydraulically pilot-operated control valve) with an additional 4-way control lever or PROPILOT (mechanical operation with Bowden cables). The ELECTROPILOT and FLEXPLOT are very easy to use because the control functions are extremely smooth and easy to regulate.



Single-handed control.  
ELECTROPILOT and CLAAS front loaders.

The ELECTROPILOT is the simplest, most convenient way of operating the front loader. For fast loading, your right hand can rest comfortably on the ELECTROPILOT on the right-hand side console. Naturally, the 3rd and 4th functions are also integrated into the ELECTROPILOT. Your left hand steers and operates the REVERSHIFT lever or the mechanical reverser when changing direction. For continuously variable restriction of maximum lifting and lowering speeds, you can easily adjust the flow rates to the electronic spool valve for the front loader on the ELECTROPILOT.

You can also use the ELECTROPILOT to operate two spool valves at the rear when the front loader is not attached.

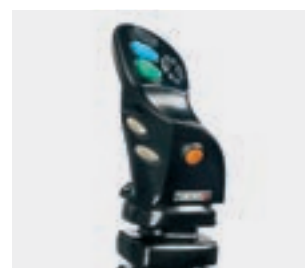
ELIOS	240	230	220	210
FL 60	□	□	□	–
FL 60 C	□	□	□	–
FL 40 C	□	□	□	□

□ Available – Not available



Strong plus points.

- Front loader brackets and controls can be factory-fitted
- All cabs are tested to FOPS guidelines (Falling Object Protective Structure)
- Three convenient operating variants to choose from: ELECTROPILOT, FLEXPILLOT or PROPILOT.
- Option of PCH hydraulic self-levelling linkage on FL front loaders or PCM mechanical self-levelling linkage on FL C models
- FITLOCK system for quick and convenient fitting/removal of the front loader
- MACH quick-attachment coupler for electrical and hydraulic connections
- FASTLOCK hydraulic locking for implements
- SHOCK ELIMINATOR vibration damping system
- Wide selection of attachments
- And not forgetting the full CLAAS service



Convenient front loader operation with the PROPILOT or FLEXPILLOT 4-way control lever.



Greater comfort – higher productivity.







The ELIOS 200 models from CLAAS introduce a modern, ergonomic generation of cabs in the compact 4-cylinder class which are designed to meet every possible requirement. The glass roof version of the cab offers an unrivalled level of visibility in this tractor class.

- Outstanding all-round view thanks to 6-pillar cab with very slim pillars
- Excellent access to the cab via the steps
- A quiet, comfortable workplace
- Electronic comfort features available for cab and platform versions

# More than a workplace. The cabs.



Cab with glass roof



## Everything in view, everything to hand.

Welcome to the ELIOS cabs. The wide-opening door, comfortable handles and self-cleaning step provide easy access to the cab, while a range of seat and steering wheel adjustment options guarantee a comfortable working environment for every driver. The air-suspended seat and air-conditioning system bring even greater comfort. To protect the driver during crop spraying applications, an active carbon filter can be installed instead of the conventional cab filter.

Large windows in the ELIOS cab provide an outstanding all-round view. In particular, the convex panes at the rear of the cab offer an unrestricted view of wide attachments or when operating in livestock housing or around the farm. Four powerful work lights illuminate the working area at night or in poorly lit housing environments.

The fully ergonomic cab and good all-round visibility allow the driver to relax and concentrate properly throughout long working days. With the glass roof you also have an almost unrestricted upward view of the raised front loader.



The heating and ventilation system has a four-stage fan and a large number of adjustable air jets. A controllable air-conditioning system is also available.



The comfort seat has air suspension, thick fabric upholstery and an extending backrest.



The windscreen opens for natural ventilation.



Cab without glass roof



Platform



The platform version of the ELIOS without a cab also has plenty to offer. The roll bar can be retracted, reducing the overall height to just 1.92 m. When combined with the optional downward-directed exhaust pipe, this allows the ELIOS to access even the lowest greenhouses, buildings and orchards.

### Your tailor-made ELIOS.

The ELIOS from CLAAS can cope with a wide range of applications and individual specifications. Tailor your ELIOS to your exact requirements:

- Cab (with or without glass roof) or platform
- Mechanical or air-suspended seat
- Fixed or adjustable steering column
- Mechanical transmission or REVERSHIFT and TWINSHIFT
- Mechanical or electronic spool valves
- Mechanical or electronic rear linkage control system



The steering column tilts and has telescopic height adjustment so it can be adapted to the driver's seating position.



On the easy-to-read instrument panel you can see all the key information at a glance. The digital display shows additional operating parameters.



The large doors open wide without protruding too far beyond the sides of the vehicle, enabling you to climb on board safely and easily even in confined spaces in buildings.



# Sophisticated electronics.

## A place for everything.

The ELIOS control concept is designed so that any driver can operate the tractor efficiently and completely intuitively. The arrangement of the controls and the symbols on them are integral to this – whether you choose a mechanical or an electronic control system. Electronic control systems are available for both cab and platform versions of the ELIOS and can be selected independently. As a result, the tractor adapts to your needs – not the other way round.

## Ergonomic side console.

The linchpin to relaxed and effective working. The side console is the result of extensive analyses of the operating processes in the cab. Frequently used functions are located at the front of the right-hand side console, while those that are used less frequently are positioned towards the back.



- 1 Control panel for rear linkage
- 2 Activate the electronic front and rear PTO
- 3 Electronic hand throttle
- 4 Control panel for electronic spool valves
- 5 Set and activate up to two engine speed memories
- 6 Time and volume settings for the electronic spool valves
- 7 Main switch, spool valves
- 8 Electronic four-wheel drive and differential lock engagement
- 9 Electronic linkage control adjustment
- 10 25 A socket
- 11 Pre-select PTO speed and ground PTO on the left-hand side console



Control panel for the electronic rear linkage: quick-lift, lower and quick-entry. The dial is used to pre-set the working depth.



Clear, logical layout.

The control panel for the electronic linkage control system is handily positioned to the driver's right. The settings can be adjusted on the right-hand C-pillar. This guarantees direct access while work is in progress, and allows the driver to optimise the electronic linkage control setting when looking backwards.

Electronic linkage control settings:

- A Position and draught control
- B Lowering speed
- C Lifting height limiter



The front PTO is always engaged electronically. For the rear PTO, this function is available as an option.



Time and volume control for the four electronic spool valves can be regulated at any time using the dials. This allows adjustment of the lowering and tilting speed of the CLAAS front loader.

# Mechanical control system.

## All-round simplicity.

If you don't need a top-end model, the ELIOS with a mechanical control system is a sound alternative. The individual controls are ergonomically arranged and completely self-explanatory. Even in this version, the standard equipment includes electronic engine speed regulation with engine speed memory as well as four-wheel drive and differential lock engagement. The rear PTO is engaged with hydraulic support without excessive use of power.

## Ergonomic side console.

The arrangement of the controls is similar in both the electronic and the mechanical versions. Frequently used functions are located at the front of the right-hand side console, while those that are used less frequently are positioned towards the back.

- 1 Rear linkage operation
- 2 Mechanical spool valve operation
- 3 Set and activate up to two engine speed memories
- 4 Electronic hand throttle
- 5 Electronic four-wheel drive and differential lock engagement
- 6 25 A socket
- 7 Pre-select PTO speed and ground PTO
- 8 Hydraulically supported rear PTO activation
- 9 Activate electronic front PTO (optional)







Electronic four-wheel drive and differential lock engagement: the speed-dependent safety cut-out prevents operating errors.



PTO work is very simple with the ELIOS, as the engine-speed memory is part of the standard specification.



The PTO is engaged with hydraulic support as standard. Electronic PTO engagement is available as an option in machines with REVERSHIFT.

# Simple. Safe. Reliable. CLAAS Service and maintenance.



The ELIOS 200 never lets you down.

Maintenance, spare parts, service: the CLAAS team does everything it can to reduce downtime with your ELIOS to an absolute minimum. We have developed clever solutions for effective maintenance – and a well-prepared machine provides maximum operational reliability. Ensuring that your machine functions correctly and retains its value are our top priorities. Because we know that your tractor is one of the keys to success.







# Maintenance must be as simple as possible.



## Ready in an instant.

Daily maintenance work should be as straightforward as possible – because we know from experience that nobody enjoys doing things that are complicated or inconvenient.

- The one-piece bonnet opens at the press of a button, providing access to all the engine maintenance points
- The oil can be checked and topped up on the right-hand side of the ELIOS when the bonnet is closed
- All daily maintenance tasks can be carried out without tools

The long oil-change intervals (engine 500 h, transmission and hydraulics 1,000 h) save a great deal of time and money. This means that less valuable working time is lost during the season and the tractor is where it should be – at work.



The battery isolating switch is built into the bonnet for ease of access.



A toolbox ensures that accessories are always to hand, even when the front loader is fitted.



Refuelling the ELIOS is straightforward as the filler neck is conveniently located to the left of the cab access steps.



Thanks to the one-piece bonnet, the entire engine compartment can be opened up at the flick of a catch. The air filter is directly accessible. The radiator slides out, and the air filter can be removed in no time at all. Radiator surfaces can be cleaned quickly and easily whenever necessary.

The cab air filter is easily accessible from the exterior for cleaning and ensures that the air in the cab is fresh at all times. To protect the driver when crop spraying, an active carbon filter can be installed instead of the conventional cab filter.



The coolant level can be checked at the radiator expansion tank.

The transmission and hydraulic oil level is checked at the rear using a dipstick.

The oil filters in the engine are easy to reach even with a front loader bracket.



# Whatever it takes. CLAAS Service & Parts.



Your requirements count.

You can always rely on us: we'll be there whenever you need us. Everywhere. Fast. Reliable. 24 hours a day if necessary. With a complete solution for your machine or business. Whatever it takes.

ORIGINAL parts and accessories.

Specially matched to your machine: precision-manufactured spare parts, high-quality consumables and useful accessories. We will supply exactly the right solution from our comprehensive product range to ensure that your machine is 100% reliable. Whatever it takes.



For your business: CLAAS FARM PARTS.

CLAAS FARM PARTS offers one of the most comprehensive spare parts programmes, regardless of brand and sector, for all agricultural applications on your farm. Whatever it takes.

Always up to date.

CLAAS dealers are among the most efficient agricultural technology businesses in the world. Our service teams are ideally qualified and equipped with the all-important special tools and diagnostic systems. CLAAS Service stands for high-quality work which meets all your expectations with regard to expertise and reliability. Whatever it takes.





### Planned reliability.

Our service products help you to increase machine reliability, minimise the breakdown risk and base your calculations on predictable costs. CLAAS MAXI CARE offers planned reliability for your machine. Whatever it takes.

### Worldwide coverage from Hamm.

Our central spare parts warehouse delivers all ORIGINAL parts quickly and reliably all over the world. Your local CLAAS partner can supply the right solution for your harvest or your business within a very short time. Whatever it takes.

The CLAAS Parts Logistics Center in Hamm, Germany, stocks more than 155,000 different parts and has a warehouse area of over 100,000 m<sup>2</sup>.



# Packed with impressive features. The ELIOS 200.



## CPS.

- Powerful yet economical 4-cylinder common rail FPT engines delivering up to 103 hp with CPM
- Excellent power-to-weight ratio from 33.8 kg/hp
- Minimum overall height of 1.92 m without cab (with roll bar retracted) and from 2.43 m with cab
- Minimum overall width of 1.65 m
- Small turning radius of 3.47 m
- Low centre of gravity for outstanding stability
- Four transmission variants, some with electronic REVERSHIFT clutchless reverser and TWINSHIFT two-stage powershift transmission
- ELECTROPILOT 4-way control lever to operate two spool valves and a front loader
- Up to 85 l hydraulic output for the rear linkage and four electronic or three mechanical spool valves
- Front linkage with integrated front PTO
- CLAAS front loaders with robust, cast steel mounting brackets ex factory
- Turf tyres available ex factory on request
- Up to 90 l fuel tank with underbody protection

## Comfort.

- Comfortable cab with air-conditioning system or natural ventilation through opening front and rear windows
- Two cab versions, with and without glass roof
- FOPS glass roof (Falling Object Protective Structure), ideal for front loader work
- Large windows in both cabs provide a superb all-round view
- Active carbon filter for optimum driver protection during crop spraying work
- Air-suspended comfort seat available as an option
- Comprehensive electronic control systems available for convenient, straightforward operation
- External rear linkage controls for enhanced safety when attaching and removing implements
- Simple maintenance thanks to easily accessible maintenance points
- Long oil-change intervals: 500 h (engine) and 1,000 h (transmission)
- CLAAS Service

ELIOS		240	230	220	210
<b>Engine</b>					
Manufacturer		FPT	FPT	FPT	FPT
Number of cylinders / intake		4/TI	4/TI	4/TI	4/TI
Cubic capacity	cm <sup>3</sup>	3400	3400	3400	3400
Common rail injection (1600 bar)	bar	●	●	●	●
Emission control EGR, DOC + DPF		●	●	●	●
Max. output (ECE R 120) <sup>1</sup>	kW/hp	76/103	68/92	62/85	55/75
Type approval value (97/68/EC) <sup>2</sup>	kW/hp	72/98	67/91	61/83	55/75
Output at nominal engine speed (ECE R 120) <sup>1</sup>	kW/hp	72/98	67/91	61/83	55/75
Nominal engine speed	rpm	2300	2300	2300	2300
Engine speed at max. torque	rpm	1600	1500	1500	1500
Max. torque (ECE R 120) <sup>1</sup>	Nm	406	366	334	309
Viscous fan		●	●	●	●
Max. fuel tank capacity	l	90	90	90	90
Oil-change interval	h	500	500	500	500

<b>Transmission</b>					
Two-wheel drive		–	□	□	□
12F/12R with mechanical reverser		–	●	●	●
Min. speed at 2200 rpm	km/h	–	1.4	1.4	1.4
Max. speed	km/h	–	30	30	30
Four-wheel drive		●	□	□	□
24F/24R with mechanical reverser and splitter		–	○	○	○
24F/24R with mechanical reverser and TWINSHIFT two-stage powershift		–	○	○	○
24F/12R with REVERSHIFT electronic reverser and TWINSHIFT two-stage powershift		●	○	○	○
Min. speed at 2200 rpm	km/h	0.5	0.5	0.5	0.5
Max. speed	km/h	40	40	40	40
Gears		4	4	4	4
Ranges		3	3	3	3
Oil-change interval	h	1000	1000	1000	1000

<b>Rear axle</b>					
Electrohydraulically activated differential lock, rear		●	●	●	●
Differential locks front/rear (self-locking multi-disc clutch at front/dog clutch at rear)		●	●	●	●
Distance between wheel mounting faces	mm	1542	1542	1542	1542
Max. rear tyres		540/65 R 30	540/65 R 30	540/65 R 30	540/65 R 30

<b>Road safety</b>					
Braking system (multiple discs in oil bath and automatic 4WD activation)		●	●	●	●
Hydraulic trailer braking system		○	○	○	○

<b>PTO</b>					
Clutch type depending on option			Hydraulically supported/electrohydraulic		
540		●	●	●	●
540 / 540 ECO		○	○	○	○
540/1000		○	○	○	○
Ground PTO		○	○	○	○
1¾" PTO stub, 6 splines		●	●	●	●

<sup>1</sup> Meets ISO TR 14396

<sup>2</sup> Performance data fit criteria for admissibility. Performance as per 97/68/EC is identical to 2000/25/EC.

CLAAS continually develops its products to meet customer requirements. This means that all products are subject to change without notice. All descriptions and specifications in this brochure should be considered approximate and may include optional equipment that is not part of the standard specifications. This brochure is designed for worldwide use. Please refer to your nearest CLAAS dealer and their price list for local specification details. Some protective panels may have been removed for photographic purposes in order to present the function clearly. To avoid any risk of danger, never remove these protective panels yourself. In this respect, please refer to the relevant instructions in the operator's manual.

All technical specifications relating to engines are based on the European emission regulation standards: Stage. Any reference to the Tier standards in this document is intended solely for information purposes and ease of understanding. It does not imply approval for regions in which emissions are regulated by Tier.

● Standard ○ Optional □ Available – Not available

ELIOS		240	230	220	210
<b>Four-wheel drive front axle</b>					
Electronic activation		●	●	●	●
Automatic 4-wheel drive		4WD disengaged automatically from 14 km/h			
Max. steering angle	degrees	55	55	55	55
Castor angle	degrees	6	6	6	6
Angle of oscillation	degrees	11	11	11	11
Turning radius	m	3.47	3.47	3.47	3.47
Track with tyres	mm	1362 9.5 R 24	1362 9.5 R 24	1362 9.5 R 24	1362 9.5 R 24
Distance between wheel mounting faces, standard axle	mm	1640	1640	1640	1640
Distance between wheel mounting faces, narrow axle (optional)	mm	1460	1460	1460	1460
Pivoting mudguards		○	○	○	○

<b>Hydraulics</b>					
Hydraulic pump for steering and transmission		●	●	●	●
Hydraulic output	l/min	26	26	26	26
2-pump hydraulic circuit		●	●	●	●
Hydraulic output to rear linkage and spool valves	l/min	59	59	59	59
3-pump hydraulic circuit		○	○	○	○
Hydraulic output to rear linkage	l/min	26	26	26	26
Hydraulic output to spool valves	l/min	59	59	59	59
Max. operating pressure	bar	190	190	190	190
Number of mechanical spool valves (min.–max.)		2-3	2-3	2-3	2-3
Four electronic spool valves, two controlled by ELECTROPILOT (only with 3-pump hydraulic circuit)		○	○	○	○
Flow control on electronic spool valves		●	●	●	●
Flow control on mechanical spool valves		○	○	○	○
Open return line		●	●	●	●

<b>Rear linkage</b>					
Max. lifting capacity at ball ends	kg	3240	3240	3240	3240
Continuous lifting power at ball ends	kg	2330	2330	2330	2330
Mechanical operation		●	●	●	●
Electronic operation		○	○	○	○
External controls		○	○	○	○

<b>Front linkage</b>					
Max. lifting power	t	2.8	2.8	2.8	2.8
Vibration damping		●	●	●	●
Cat II lower link hooks		●	●	●	●
Front PTO 1000		○	○	○	○
Front PTO 540 ECO		○	○	○	○

<b>Cab</b>					
Cab with/without glass roof		□/□	□/□	□/□	□/□
Platform		□	□	□	□
Driver's seat, mechanical suspension		●	●	●	●
Driver's seat, air suspension		○	○	○	○
Comfort seat, air suspension (only with cabs)		○	○	○	○
Steering column, tilting and telescopic height adjustment		○	○	○	○
Heating		●	●	●	●
Air conditioning		○	○	○	○
Opening front windscreen		●	●	●	●
Opening rear window		●	●	●	●
Rear window wiper		○	○	○	○
Max. number of work lights, front/rear		2/2	2/2	2/2	2/2
25 amp socket		●	●	●	●

● Standard ○ Optional □ Available – Not available



ELIOS		240	230	220	210
-------	--	-----	-----	-----	-----

### Dimensions and weights

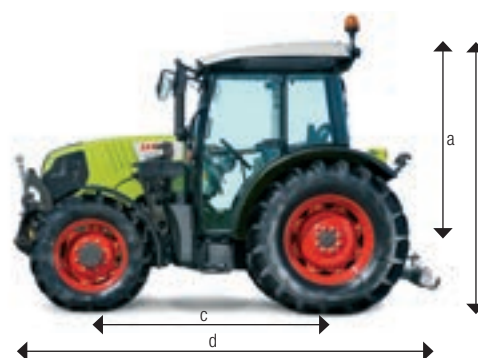
(standard tyres, four-wheel drive version, with oil and fuel, without driver)

Length (without front ballast, without front linkage) (d)	mm	3815	3815	3815	3815
Minimum external width	mm	1644	1644	1644	1644
Centre of rear axle to top of cab without glass roof (a)	mm	1734	1734	1734	1734
Overall height (b): with rear tyres 380/85 R 30					
Cab with glass roof	mm	2540	2540	2540	2540
Cab without glass roof	mm	2434	2434	2434	2434
Platform with roll bar	mm	2665	2665	2665	2665
Platform with roll bar retracted	mm	1915	1915	1915	1915
Wheelbase with four-wheel drive (c)	mm	2156	2156	2156	2156
Ground clearance, front axle (e) with front tyres 320/85 R 20	mm	350	350	350	350
Ground clearance, rear axle (without drawbar) (f) with rear tyres 420/85 R 30	mm	405	405	405	405
Weight without ballast (platform two-wheel drive / cab four-wheel drive)	kg	2850/3310	2850/3310	2850/3310	2850/3310
Max. permissible gross weight	kg	5100	5100	5100	5100
Max. additional front ballast without front linkage	kg	545	545	545	545

### Tyres

The tyre combinations are listed by diameter, in ascending order.

Rear tyres	Front tyres				
14.9 (380/85) R 30	7.50-16 <sup>1</sup>	–	□	□	□
	9.5 (250/85) R 24	□	□	□	□
16.9 (420/85) R 28	12.4 (320/85) R 20	□	□	□	□
	12.4 (320/85) R 36	–	□	□	□
16.9 (420/85) R 30	7.50-16 <sup>1</sup>	–	□	□	□
	11.2 (280/85) R 24	□	□	□	□
	320/70 R 24	□	□	□	□
	14.9 (375/75) LR 20	□	□	□	□
480/70 R 30	11.2 (280/85) R 24	□	□	□	□
	320/70 R 24	□	□	□	□
	320/70 R 24	□	□	□	□
540/65 R 30	320/70 R 24	□	□	□	□
	420/65 R 20	□	□	□	□
23.1-26 <sup>2</sup>	550/45-22.5 <sup>2</sup>	□	□	□	□



<sup>1</sup> Tyres for models with two-wheel drive

<sup>2</sup> Turf tyres



CLAAS KGaA mbH  
Postfach 1163  
33416 Harsewinkel  
Deutschland  
Tel. +49 5247 12-0  
claas.com

HRC / 345012000316 KK DC 0416 / 00 0259 573 4